

# *Cirrus*<sup>®</sup>

**C-VC25**  
**Cordless Vacuum**

**Owner's Manual**



# Index

- 1. Important Safety Instructions**
- 2. Getting to know your machine**
- 3. Getting started**
  - a. Assembling your machine**
  - b. Attaching the wall bracket**
  - c. Installing the battery**
  - d. Charging the battery**
- 4. Using your machine**
  - a. Using as a stick vac**
  - b. Using as a handheld vac**
- 5. Taking care of your machine**
  - a. Removing the battery**
  - b. Emptying and cleaning the dirt container**
  - c. Cleaning the pre-motor filter and separator**
- 6. General Maintenance**
  - a. Removing blockages**
  - b. Removing and replacing the brushbar**
- 7. Troubleshooting**
- 8. Cirrus Limited Warranty**

# 1. IMPORTANT SAFETY INSTRUCTIONS

## Safety Notice

### IMPORTANT SAFETY INSTRUCTIONS

When using an electrical appliance, basic precautions should always be followed, including the following: **READ ALL INSTRUCTIONS BEFORE USING (THIS APPLIANCE)**, failure to follow the warnings and instructions may result in electric shock, fire and/or serious injury.

#### WARNING

To reduce the risk of fire, electric shock, or injury:

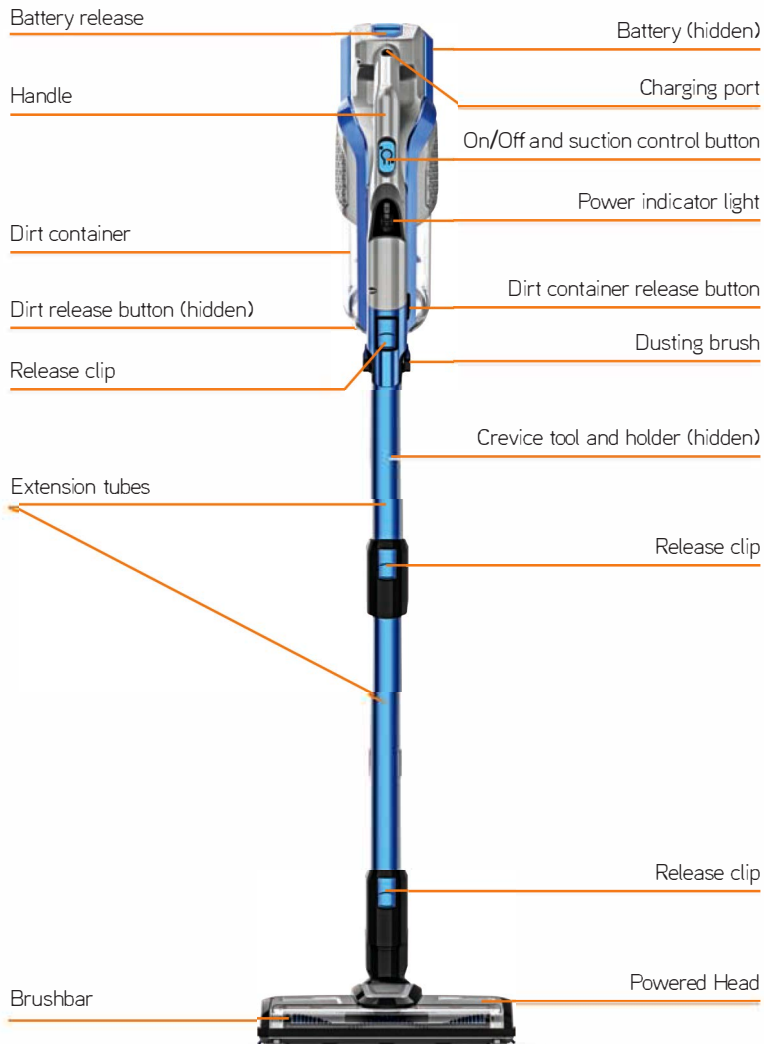
1. Do not use outdoors or on wet surfaces.
2. Do not allow to be used as a toy. Close attention is necessary when used by or near children, pets or plants.
3. Use only as described in this manual. Use only manufacturer's recommended attachments.
4. Do not use with damaged cord or plug. If appliance is not working as it should, has been dropped, damaged, left outdoors, or dropped into water, return it to a service center.
5. Do not pull or carry by cord, use cord as a handle, close a door on cord, or pull cord around sharp edges or corners. Do not run appliance over cord. Keep cord away from heated surfaces.
6. Do not unplug by pulling on cord. To unplug, grasp the plug, not the cord.
7. Do not handle charger, including charger plug, and charger terminals with wet hands.
8. Do not put any object into openings. Do not use with any opening blocked. Keep free of dust, lint, hair, and anything that may reduce air flow.
9. Keep hair, loose clothing, fingers, and all parts of body away from openings and moving parts.
10. Use extra care when cleaning on stairs.
11. Do not use to pick up wash detergent, kerosene, broken glass, needles, wet dust, sewage, etc., flammable or combustible liquids, such as gasoline, or use in areas where they may be present.
12. Do not pick up anything that is burning or smoking, such as cigarettes, matches, or hot ashes.
13. Do not operate the vacuum cleaner too close to heaters, radiators and other hot surfaces.
14. Do not use without dust cup and filters and brush roller in place.
15. Never operate with blocked air inlet or blocked floor brush roller when using, or it may cause burned motor.
16. Do not immerse the body of vacuum cleaner into water as this would cause a short circuit and damage the unit.
17. The appliance must be fully charged when new or after being stored for a long-time with no use. If not used for more than 3 months appliance needs to be charged.

18. Use dry cloth to clean the appliance and do not use petrol, lacquer thinner etc., or surface of model will easily crack and fade in color.
19. Prevent unintentional starting. Ensure the switch is in the off-position before picking up or carrying the appliance. Carrying the appliance with your finger on the switch may cause accidents.
20. Disconnect the battery pack from the appliance before making any adjustments, changing accessories, or storing the appliance. Such preventative safety measures reduce the risk of starting the appliance accidentally.
21. Recharge only with the charger specified by the manufacturer. A charger that is suitable for one type of appliance may create a risk of fire when used with another appliance.
22. Use appliances only with specifically designated battery packs. Use of any other battery packs may create a risk of injury and fire. Always use the Cirrus battery pack made for the C-VC25 from Cirrus Vacuums, Twinsburg, Ohio 44087.
23. When battery pack is not in use, keep it away from other metal objects, like paper clips, coins, keys, nails, screws or other small metal objects, that can make a connection from one terminal to another. Shorting the battery terminals together may cause burns or a fire.
24. Under abusive conditions, liquid may be ejected from the battery. Avoid contact. If accidental contact occurs, then flush with water. If liquid contacts eyes, additionally seek medical help. Liquid ejected from the battery may cause irritation or burns.
25. Do not use an appliance that is damaged or modified. Damaged or modified appliances and batteries may exhibit unpredictable behavior resulting in fire, explosion or risk of injury.
26. Do not expose an appliance to fire or excessive temperature. Exposure to fire or temperature above 130°F may cause explosion.
27. Follow all charging instructions and do not charge the appliance outside of the temperature range specified in the instructions. Charging improperly or at temperatures outside of the specified range may damage the appliance and increase the risk of fire.
28. Service appliance by a qualified repair person using only identical replacement parts. This will ensure that the safety of the product is maintained.
29. Do not modify or attempt to repair the appliance except as indicated in the instructions for use and care.
30. This vacuum cleaner cannot be used by children aged from 8 years or younger and persons with reduced physical, sensory or mental capabilities or lack of experience and knowledge unless they have been given supervision or instruction concerning use of the vacuum cleaner in a safe way and understand the hazards involved. Children should not play with the vacuum cleaner. Cleaning and user maintenance should not be done by children without supervision.
31. Environment Requirements: The appliance should be stored and used and charged only in the temperature range of 50-104°F.
32. Risk of injury. Brush may start unexpectedly. Remove the main body before cleaning or servicing.

**SAVE THESE INSTRUCTIONS  
HOUSEHOLD USE ONLY**



## 2. Getting to know your machine



Electrostatic Bare Floor Brushbar



### 3. Getting started

#### Before you begin

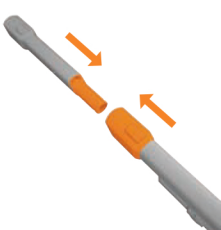
**CAUTION:** Always switch off the vacuum cleaner before connecting or disconnecting the handheld/attachments or removing and emptying the dirt container.

**IMPORTANT:** The vacuum cleaner is equipped with a thermal cut-out. If for any reason the vacuum cleaner does overheat the thermostat will automatically turn the vacuum cleaner off. If this happens empty the dirt container and check the vacuum cleaner for blockages. Allow the vacuum cleaner to cool for approximately 1 hour (if you have cleaned the filter please wait 24 hours for the filter to fully dry before putting back into the machine).

For best cleaning results, filters require cleaning at least every 3 months and should be replaced every 12 months depending upon use.

#### a. Assembling your machine

**CAUTION:** This vacuum cleaner is not free standing, in between uses or when carrying out any maintenance always lie flat on the floor in a suitable location so it does not become a trip hazard or can be stepped on.



The extension tubes are different lengths. We advise to have the longer extension tube connected to the handheld. Line up the connector on the extension tubes and push together until they click into place.



Line up the connector on extension tubes with the powered head. Push the extension tubes down onto the powered head until it clicks into place.



Push the handheld down onto the extension tubes until it clicks into place.



Slide the crevice tool into the crevice tool holder located on the longest extension tube.



The vacuum cleaner is not free standing and in between uses must always be stood either in the wall bracket or lay flat on the floor, in a suitable location so it does not become a trip hazard or can be stepped on.

## Getting started

### b. Attaching the wall bracket



Fully assemble the vacuum.



Line up the wall bracket with the back of the handheld. Slot the bracket into the handheld and push upwards to lock into place.



Choose a location for the vacuum to be stored. Stand the vacuum in the upright position against the wall, with the powered head flat on the floor.



Hold the wall bracket firmly into position. Carefully lift and remove the vacuum away from the wall bracket.



Using a pencil make a small mark for each screw.



Use the screws and wall plugs to secure the wall bracket to the wall.



Store the vacuum onto the wall bracket by lifting the vacuum slightly above the bracket and lowering the back of the handheld down and onto the bracket. Always make sure the vacuum is securely locked into place.



### c. Installing the battery into the machine and charging the battery

**CAUTION:** The battery used in this device may present a risk of fire or chemical burn if mistreated. Do not disassemble or heat above manufacturer's maximum temperature limit (60° C/140°F) or incinerate. Replace battery with Cirrus battery only. Use of another battery may present a risk of fire or explosion. Dispose of used battery properly. Keep away from children. Do not disassemble and do not dispose of in a fire. Do not attempt to disassemble the battery or remove any component projecting from the battery terminals. The battery and charger have no user serviceable parts. Fire or injury may result. Prior to disposal, protect exposed terminals with heavy insulating tape to prevent shorting. The battery is to be disposed of safely at your local battery recycling center.

For best performance the terminals on both the battery and the appliance must be clean and free from dust and dirt. Do not attempt to recharge non-rechargeable batteries. The battery must be removed from the appliance before it is scrapped. The appliance must be disconnected from the supply mains before use and when removing or installing the battery into the machine. In case of battery leakages avoid any contact with the skin.

**NOTE:** The initial charge is 5 hours, charging will be required before first use. The vacuum can be charged with the handheld either attached to, or detached from the extension tubes. Failure to fully charge the battery before first use (initial charge 5 hours) may result in poor battery performance.



Line up the battery with the ridges inside the back of the handheld. Slide the battery into the handheld until it clicks into place.



Insert the charger lead into the charger inlet located on the back of the handle. The vacuum can be charged while attached to the wall mount or as a handheld.



Plug the charger plug into the outlet.

## Getting started

### d. Charging the battery

**WARNING:** Do not use the vacuum cleaner when the machine is plugged in and charging.

**NOTE:** The life expectancy of the battery will vary depending on the usage of the vacuum cleaner.

The battery **should be** permanently installed in the machine when charging.



When the charger is connected the power indicator light will illuminate:

RED solid light – The battery is charging

GREEN solid light – The battery is charged (After 5 hours)

**If charging for the first time the initial charge time is 5 hours.**

## 4. Using your machine

**CAUTION:** This vacuum has a constantly rotating brushbar when the brushbar has been activated. Never leave the vacuum cleaner in one spot for an extended period of time as this may damage the floor surface. To prevent any damage being sustained test on an inconspicuous area of the flooring.

### a. Using as a stick vacuum



Place your foot on the powered head and pull the handle backwards to recline.



Press the on/off button to turn the machine on. Press the on/off button again to turn low suction mode on. The third press of the on/off button will turn the machine off.

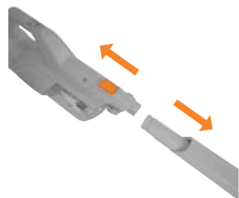


The power indicator light on the handle will flash green and red to indicate when the battery is running low.

## Using your machine

### b. Using as a handheld vacuum cleaner

**NOTE:** The handheld, tools and accessories can be detached by pressing the relevant release clip.



Press the release clip on the handheld. Pull to remove the extension tubes out of the handheld.



The extension tubes when attached to the powered head/accessories are not free standing. Place safely and securely to one side.



In a hinge like manner lift the on board dusting brush and push until it clicks securely onto the nozzle. (the extension tubes and tools will not fit into the handheld when the dusting brush is raised)



Both the crevice tool and powered head will fit directly into the handheld nozzle. Push the chosen accessory into the nozzle until it clicks securely into place.



One or both of the extension tubes can be attached to the handheld depending on length of reach required.



The powered head and crevice tool will attach directly into each of the extension tubes.

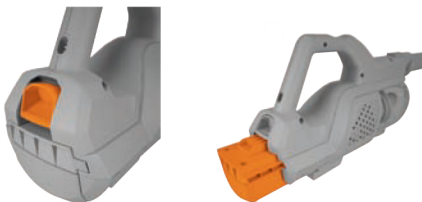


Press the on/off button to turn the machine on. Press the on/off button again to turn low suction mode on. The third press of the on/off button will turn the machine off.

## 5. Taking care of your machine

**WARNING:** Always switch off the vacuum cleaner, unplug the charger from the mains and remove the battery from the vacuum before carrying out any maintenance or troubleshooting. Only **Cirrus** recommended charger and battery should be used with this vacuum cleaner.

### a. Removing the battery



Lie the handheld on a flat stable surface. Press down the battery release button.

Slide the battery out from the back of the handheld.

### b. Emptying and cleaning the dirt container

**NOTE:** Don't over fill the dirt container to avoid blocking the air flow through the vacuum cleaner.



Press the release clip on the handheld. Pull and remove the extension tubes or any accessory attached to the handheld.



The extension tubes when attached to the powered head/accessories are not free standing. Place safely and securely to one side.



Hold the handheld over a bin, press the dirt release button to allow dirt/debris to fall out.





## Taking care of your machine

### c. Cleaning the pre-motor filter and separator

**CAUTION:** Always remove the extension tubes/accessories and battery from the handheld and empty the dirt container before cleaning the separator and filter. **DO NOT** use the vacuum without the filters in place.

**CAUTION:** Incorrect fitting of the separator and filter will reduce suction.



Press the dirt container release button located on the side of the handheld to unlock the dirt container.



Pull the dirt container and remove from the handheld.



To clean the HEPA filter, turn the insert counterclockwise to release the locking mechanism and gently pull out the HEPA filter cartridge. The insert is the end that allows you to see the pleated HEPA filter.



Gently tap the cartridge over a bin to remove any dirt/debris. Reinsert filter or replace with a new filter by doing the reverse steps.



Wash the **dirt separator** under running water (104 degrees F max).



Leave for 24hrs or until fully dry before replacing.



Pull and remove the separator out from the dirt container.



Tap the separator over a bin to remove any dirt/debris. Using a dry cloth wipe any remaining dirt /debris.



Re fit the separator making sure the tabs on the separator line up and slot into the dirt container.

## 6. General Maintenance

**IMPORTANT:** If the brushbar has been obstructed the Motor Protection Sensor may have been activated. Remove the powered head from the machine and clear any obstruction. Refit the powered head, switch on the vacuum cleaner by pressing the on/off suction control button.

### a. Removing blockages from powered head



Using scissors remove any threads or hair from around the brush bar and clear any dirt or debris from powered head.

### Removing blockages from extension tubes



To test for a blockage in the extension tubes, drop a small ball of paper into each extension tube. The paper will drop through if the extension tube is clear. Use a broom handle or similar blunt object to remove any blockage.

### b. Removing and replacing the brushbar



Turn the lock release to unlock the powered head cover.



Remove the brushbar by lifting the side of the brushbar not connected to the spindle first.



Clear any threads or hair from around the brushbar and any dirt/debris from inside the brushbar housing.



When refitting/replacing the brushbar fit the spindle side first. Push the brushbar onto the spindle, line up and push the other side of the brushbar back into the powered head. Refit and lock the powered head cover to secure.

Follow these same steps when you want to use the electrostatic bare floor brushbar with blue bristles.



## 7. Troubleshooting

### Problem

### Solution

Is there an accessory missing?

- Check the contents panel on the box to make sure the part is included with your vacuum cleaner.

Why does my vacuum cleaner have no power?

- The battery may not be charged. Go to 'Getting Started'.
- The motor thermostat may have tripped. If this has happened, switch off the vacuum cleaner. Remove and empty the dirt container and check for blockages. Clean the filter and separator and allow the vacuum cleaner to cool for approximately 1 hour (if you have washed the filter you will need to wait 24 hours for the filter to fully dry before putting back into the vacuum cleaner).

Why isn't the power indicator light on the vacuum cleaner lit when the battery is charging?

- Check the battery charger is plugged in. Go to 'Getting started'.
- Check the battery is inserted correctly. Go to 'Getting started'.

Why won't the vacuum cleaner pick up?

- The filter or separator are not correctly fitted. Go to 'Taking care of your machine'.
- The filter may be clogged, clean the filter. Go to 'Taking care of your machine'.
- The dirt container may be blocked, empty the dirt container. Go to 'Taking care of your machine'.
- There maybe a blockage in the extension tubes, disconnect from the vacuum cleaner and carefully remove any blockages. Go to 'General Maintenance'.

Why won't the Powered head brush turn?

- The powered head brushbar has not been activated. Go to 'Using your machine'.
- The powered head may be obstructed. Go to 'General Maintenance'.

Why is dust escaping from the vacuum?

- The filters may be clogged, clean the filters. Go to 'Taking care of your machine'.

**IMPORTANT:** The motor is equipped with a thermal protector. If, for any reason, the vacuum cleaner should overheat, the thermal protector will automatically turn the unit off. Should this occur, turn off the switch. Remove the filter and empty dust bin if full. Clean the filters. Allow the vacuum cleaner to cool for approximately one (1) hour. To restart, turn the switch back on

### ***Other Consumer Safety Information***

**This appliance is intended for household use only.**

### **Cirrus Limited Warranty**

What this limited warranty covers:

Cirrus Vacuum, ("Cirrus") warrants that your Cirrus domestic model **C-VC25** vacuum, for a period of two years from you date of purchase will be free from all defects in material and workmanship for normal household use in accordance with the Owner's Manual. This limited warranty is granted only to the original purchaser. This limited warranty is subject to the following provisions.

What this limited warranty does not cover:

- Expenses related to pick up, delivery.
- Parts of the cleaner that require replacement under normal use, such as filters, drive belts, and brushroll bristles.
- Damages or malfunctions caused by accidents, acts of God, negligence, abuse, or use not in accordance with the Owner's Manual.
- Defects or damages caused by improper service or maintenance, the use of parts other than genuine Cirrus parts or modifications made to the cleaner without our prior written approval.
- Damage that occurs during shipment.
- Vacuums purchased outside the United States.
- Domestic vacuums subject to commercial or rental use.

#### ***What Cirrus will do:***

The manufacturer will, at its option, repair or replace a defective vacuum or vacuum cleaner part that is covered by this limited warranty. As a matter of warranty policy, Cirrus Vacuum will not refund the consumer's purchase price.

#### ***Warranty Registration:***

To register for warranty please visit our website at [www.CirrusVacuum.com](http://www.CirrusVacuum.com) and fill out a registration form located under Warranty Registration.

#### ***Obtaining warranty service:***

To obtain warranty service, you must return the defective vacuum cleaner part along with proof of purchase to any Cirrus Authorized Warranty Station. For the location of the closest

Cirrus Authorized Warranty Station or for service information, email  
info@cirrusvacuum.com.

If you prefer, you can write to:

**Cirrus Vacuum**  
**1933 Highland Road**  
**Twinsburg, OH 44087**

If it is necessary to ship the vacuum outside your community to obtain warranty repair, you must pay the shipping charges. When returning parts for repair, please include the model number and serial number from the data label on the vacuum cleaner.

***Further Limitations and Exclusions:***

THE WARRANTY PROVIDED ABOVE IS EXCLUSIVE AND IN LIEU OF ALL OTHER EXPRESS OR IMPLIED WARRANTIES. EVERY IMPLIED WARRANTY, INCLUDING ANY WARRANTY OF MERCHANTABILITY OR FITNESS FOR A PARTICULAR PURPOSE IS DISCLAIMED EXCEPT TO THE EXTENT PROHIBITED BY LAW, IN WHICH CASE SUCH WARRANTY IS LIMITED TO THE DURATION OF THIS WRITTEN WARRANTY. UNLESS STATED HEREIN, ANY STATEMENTS OR REPRESENTATIONS MADE BY ANY OTHER PERSON OR FIRM ARE VOID. WE EXCLUDE ALL CLAIMS FOR LOSS, INCONVENIENCE OR DAMAGE INCLUDING DIRECT, SPECIAL, INCIDENTAL OR CONSEQUENTIAL DAMAGES, RESULTING FROM THE USE OR INABILITY TO USE THE VACUUM PRODUCT, WHETHER RESULTING FROM BREACH OF WARRANTY OR ANY OTHER LEGAL THEORY. IN NO EVENT WILL CIRRUS VACUUM'S LIABILITY EXCEED THE PURCHASE PRICE OF THE VACUUM CLEANER, LESS DEPRECIATION.

Some jurisdictions do not allow limitations on how long an implied warranty lasts and some jurisdictions do not allow the exclusion or limitation of incidental or consequential damages, so the above limitations and exclusions may not apply to you. This warranty gives you specific legal rights, and you may also have other rights, which vary from jurisdiction to jurisdiction.