

P.O. Box 967, Pratt, KS 67124
620-672-5538 • 800-828-5538
www.ninnescah.com



NINNESCAH RURAL ELECTRIC COOPERATIVE

Watts Ahead

Ninnescah Rural Electric Co-op, Inc.

Board of Trustees

Ronald R. Schultz
President

Glen M. Honeman
Vice President

Paul W. Unruh
Secretary

Edwin D. Lenkner
Treasurer

Michael Christie
Trustee

Lori R. Jones
Trustee

Ruth Teichman
Trustee

Kenneth E. Unruh
Trustee

Bruce E. Warren
Trustee

Staff

Teresa Miller
General Manager

Robert Lamatsch
Manager of Operations

In Case of an Outage

If your electricity is off for more than a few minutes, please call 800-828-5538. The office hours are 8 a.m. to 5 p.m., Monday–Friday. After hours, calls will be answered by dispatch and forwarded to our on-call personnel.

A Balanced Fuel Mix Promotes Power Reliability

As I've noted before in my past columns, the energy industry is undergoing a dramatic transformation as consumer demand for more renewable energy sources grows, and innovation and technology continue to advance exponentially. You're likely witnessing this energy evolution firsthand.

In driving across the region, you may have noticed fields of solar panels, along with an increase in solar panels on your neighbors' roofs. Maybe you've heard about the impending changes in the transportation sector with most major vehicle companies announcing plans to offer more electric vehicles at more affordable prices.

Consumer interest in renewable energy is strong and growing. In addition, national studies indicate that consumers have an expectation that

companies operate in an ethical and responsible manner — including when it comes to the environment.

At Ninnescah Rural Electric, we have always put the good of our community first. While our primary function is to provide reliable and affordable energy to our members, we are more than an electricity provider. Because we are a co-op, our mission is to enrich the lives of our members and to serve the long-term interests of our community. We feel we're doing both by investing in renewable energy sources.

Green energy is certainly not new. Solar, wind and hydro power have been around for decades. However, the recent innovations and advances in renewable technology have led to sharp decreases in cost, making it more feasible and accessible. In recent

Continued on page 16C ►

ENERGY EFFICIENCY Tip of the Month

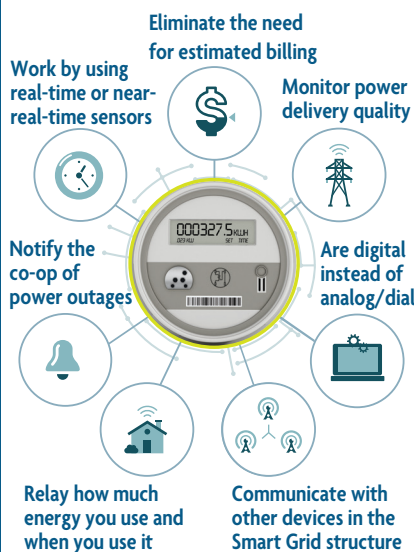
During summer months, run large appliances that emit heat (like clothes dryers and dishwashers) during the evening when it's cooler. This will minimize indoor heat during the day when outdoor temperatures are highest.

SOURCE: NRECA



HOW AMI METERS HELP OUR MEMBERS AND THE CO-OP

Unlike the older-style electricity meters that are read manually, AMI meters use sensors to measure the amount of electricity flowing in and out of your home.

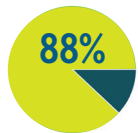


AS OF 2019

**94.8
MILLION**

AMI METERS* had been installed across the country.

**Includes hourly interval meters and real-time meters that are capable of recording and transmitting instantaneous data.*



88%, or 83.4 million, were residential.

Almost 65% of residential units had an AMI meter.

Source: U.S. Energy Information Administration



Scholarship Winners Announced

The 2021 Ninnescah Rural Electric Scholarship Contest was held at Ninnescah's office on April 21.

Contestants took a test based on an information packet provided to them and were interviewed by a panel of three judges. Contestants included: Darian Cox, Isabel; Madison Dowsey, Cunningham; Madeline Drake, Preston; Anniston Henning, Harper; Addie Hoeme, Preston; Cali Newdigger, Macksville; Riley Prosser, Pratt; Daniel Spitzer, Preston; Victoria Tetrick, Kingman; and Halle Young, Greensburg.

Our winners of the 2021 scholarships will each receive a \$1,000 to use at the college or technical school of their choice. They are **DARIAN COX, MADISON DOWSEY, ADDIE HOEME, CALI NEWDIGGER** and **RILEY PROSSER**.

We are hopeful the trips will resume next year. They are open to sophomores and juniors whose parents or guardians are members of Ninnescah. Those living in our service territory may also participate even though the service is not listed in their parents name. Please contact Nancy Aschenbrenner for information about the trips/scholarships for next year at 800-828-5538.



Darian Cox



Madison Dowsey



Madeline Drake



Anniston Henning



Addie Hoeme



Cali Newdigger



Riley Prosser



Daniel Spitzer



Victoria Tetrick



Halle Young



HAPPY
★
4TH OF JULY
★ ★ ★
INDEPENDENCE DAY

**Our office will be closed on
Monday, July 5, for the holiday.**

A Balanced Fuel Mix Promotes Power Reliability

Continued from page 16A ►

years, Ninnescah Rural Electric has been able to adjust our fuel mix by using more renewables.

However, to borrow a nautical analogy, it takes a long time to turn the direction of a large ship — and changing the energy mix we use to power homes and businesses doesn't happen overnight. While renewable energy use is increasing, we will still depend on traditional forms of energy to keep power flowing reliably to your home. After all, solar and wind energy are referred to as "intermittent" power since the sun does not always shine and the wind does not always blow. This fact coupled with the growing demand for renewables creates its own challenges. That's why there is real value in maintaining a balanced mixture of fuel types to ensure reliability and resiliency and meet the

growing demand for electricity.

As the energy industry continues to evolve, Ninnescah Rural Electric is striving to take advantage of technology advances and market opportunities as they become available. This means Ninnescah Rural Electric can leverage the flexibility of the grid to offer a wider range of renewable power selections as we continue to bring safe, reliable and affordable power to our community.

Albert Einstein once observed that "Life is like riding a bicycle. To keep your balance, you must keep moving." For Ninnescah Rural Electric to meet the growing demand for renewable energy and ensure the reliability of our power supply, we must constantly make operational adjustments as we strive for balance and a brighter future for our members.

CHANGE IT
DO NOT ADJUST SPRAYER ARMS
NEAR POWER LINES
#CATCHITCHANGEIT

DEADLIEST
Safety Catch

Farm machinery continues to get bigger, creating a dangerous "dance" around power lines. Avoid deadly and costly collisions with overhead lines by re-routing and readjusting your location. Dangerous situations like a spray rig underneath power lines can turn bad in an instant. #CatchItChangeIt

Summer Rates Begin with July Billing

We would like to remind you that Ninnescah's summer rates will be reflected on your July bill. The summer rates will remain in effect through your October bill. We are listing below the rates for electric service.

Summer Rates		Cost
Single Phase	Customer Charge	\$27.50
	Summer Energy Charge	\$0.1406 per kWh
	Energy Cost Adjustment	varies monthly
Three Phase	Customer Charge	\$37.50
	Summer Energy Charge	\$0.1406 per kWh
	Energy Cost Adjustment	varies monthly
Irrigation No Control	Customer Charge	\$25.00
	Annual Horsepower Charge*	\$42.50 per HP
	Summer Energy Charge	\$0.1231 per kWh
	Energy Cost Adjustment	varies monthly
Irrigation Direct Co-op Control	Customer Charge	\$25.00
	Annual Horsepower Charge*	\$37.50 per HP
	Summer Energy Charge	\$0.0881 per kWh
	Energy Cost Adjustment	varies monthly

*Billed in five equal installments on April-August bills

Welcome New Members

Gregory T &/or Tina Kessler – Sawyer
Dereck &/or Tawnya Peery – Ardmore, OK
Brooke O'Moore – Sawyer
Dylan T O'Moore – Sawyer
Tom Turner – St. John
Matthew K Orr – Victoria
Angela M &/or Cory M Beeler – Stafford
John &/or Kimberly A Bales – Sawyer
Elaine K Unruh – Greensburg
Royal Energy Inc – Dodge City
Chris Pearson – LaGrange, GA
Kaylene M &/or Jarrod W Black – Pratt
John K fields Tr#1 6/20/2000 – Pratt

Safe Summer Driving

BY FAMILY FEATURES

Ensure your tires are ready for the road

During the warmer months, additional travel and hot roadways can put added stress on your vehicle and its tires, in particular. Normal driving, turning and braking on hot roads can pose safety risks to your vehicle and tires. Whether you are simply commuting or planning a road trip this summer, these tips from the experts at your neighborhood Discount Tire store can help keep you safe on the road this summer.

Get Pressure Right and Check It Often

Low tire pressure can lead to many issues for your tires, like decreased steering and braking control, poor gas mileage, excessive tire wear and the possibility of tire failure. Temperature changes can also impact tire pressure; for every 10 degrees in temperature change, your tire pressure changes 1 PSI (pound per square inch). To stay safe on the road, check your tire pressure at least once a month when the tires are cool. The impacts of bumps and turns from everyday use can lead to normal air loss, so be sure to check regularly and before any road trips. You can find the manufacturer's recommended tire pressure on a sticker in your car's door jamb or in your owner's manual.

Check Your Tread

Tread depth refers to the amount of tread on a tire, which can impact a vehicle's handling, traction and safe stopping



Placing an upside-down penny in any tread groove is an efficient way to check your tires' tread. If you can see Lincoln's entire head, it's time for a replacement.



If precautions are not taken, the summer weather can lead to extra wear and tear on your vehicle. Checking your tire pressure, tread and spare tire kit are all steps to prevent any unwanted issues.

distance. More tread equals better road grip and shorter stopping distances while cars with lower tire tread can take significantly longer to stop. To easily check your tread depth, stick a penny upside down in a tread groove. If you can see President Lincoln's entire head, your tread is worn down and it's time to replace your tires.

Rotate Tires Often

Tires should be rotated every 6,000 miles or earlier if you notice any uneven wear. Rotating your tires increases tread life and helps ensure a smooth and safe ride.

Double Check Your Trunk

Many newer vehicles have replaced spare tires with tire inflation kits. These kits include tools to keep you on the road, like puncture-coating sealants, air compressors, and run-flat tires. Check to see what is included with your vehicle and consider adding a roadside assistance plan in case you experience a flat tire or other issues.

Ask an Expert

Stay educated on your tires and what you need to do to keep them safe. Consider booking an appointment for a free tire safety check at a local store like Discount Tire. You can even stay in your car while service is performed as part of the touchless experience. If it is time to replace your tires, an option like the Treadwell online tire guide can help you find personalized tire recommendations for your specific vehicle, where you live and your driving habits.