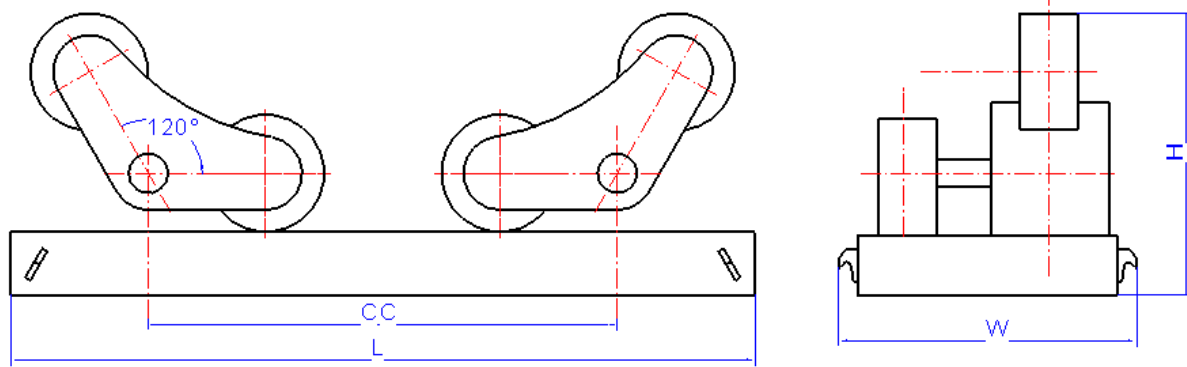


### Overall size and weight (120°)



Model	L(mm)		W(mm)		H(mm)		CC(mm)
	Driving	Idler	Driving	Idler	Driving	Idler	
SAR5	1600	1430	725	480	620		900
SAR10	1920	1700	730	450	765		1100
SAR20	2290	2110	810	470	850		1400
SAR40	2640	2400	900	492	975		1600

### Technical parameter (120°)

Model	Max. rated loading (kg)	Applicable work-pc range (mm)	Roller's Dia. And width (mm)		Roller linear speed (m/h)	Motor power (kW)	Power supply
			Rubber roller	Metallic roller			
SAR5	5000	250~3000	φ 250×100	2× φ 240×20	6~60	0.75	380/440/3Phase/50/60hz Specify input voltage when ordering
SAR10	10000	320~3700	φ 300×120	2× φ 290×25	6~60	1.1	
SAR20	20000	530~4760	φ 350×120	2× φ 340×30	6~60	1.5	
SAR40	40000	580~5430	φ 400×120	2× φ 390×40	6~60	3	