

We're empowering high-speed connections throughout Arkansas.



Diamond State
Networks

LEARN MORE

diamondstatenetworks.com

MILES OF FIBER

50,000+

TOTAL INVESTMENT

\$1.6 BILLION

TOTAL RESIDENTS SERVED

1.25MM+

ARKANSAS COUNTIES SERVED

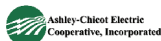
71 of 75

The state of Arkansas will award millions in broadband funding, and Diamond State Networks hopes to bring service to your area.

my co-op

Working together, we will create a much brighter future for Arkansas.

We are a partnership formed by 14 Arkansas, member-owned electric cooperatives. Our mission is to catalyze the growth of high-speed connections throughout our state and to help make Arkansas the most significantly connected state in the country. Diamond State Networks is committed to providing high-speed network connections, the next essential service.



Here's how you can help:

1. Let your Arkansas state legislators know you support Diamond State Networks and the rural cooperatives' plan for better broadband.
2. Take the broadband survey at surveymonkey.com/r/arbroadband.

Scan this QR code with your smart phone camera to take the survey.

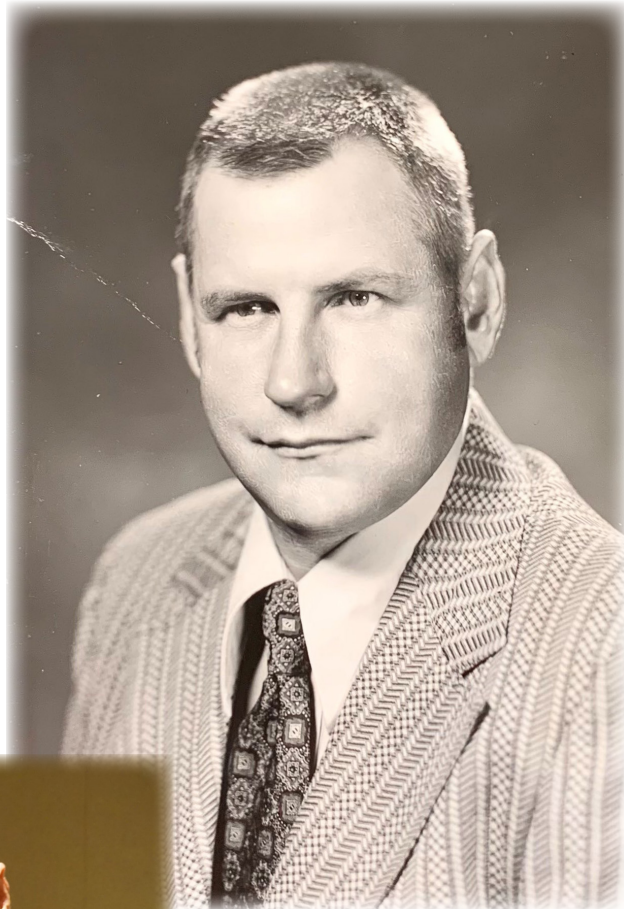


In Remembrance of Woodruff Electric Board Member J.A. Wampler

Mr. J.A. Wampler, 83, resident of McCrory, Arkansas, departed this life on Tuesday, Nov. 16, 2021. An active director, he had served on the Woodruff Electric Cooperative Board of Directors since 1972. During that time, he was elected to the positions of Chairman, Vice Chairman and Secretary-Treasurer. He had also served on the Arkansas Electric Cooperative Corporation's Board of Directors where he began his service in 1974 and served as Board Chairman in 1996. Mr. Wampler served with distinction as an outstanding leader who was very dedicated and determined to serve the members of Woodruff Electric and the rural electric program.

Mr. Wampler served the cooperative for nearly five decades and was recognized for his long years of unselfish service to the rural electric cooperative program in 2007 when he received the Electric Cooperatives of Arkansas Pioneer Wall of Fame Award. He was truly a pioneer and supporter of the electric cooperative program, not only in eastern Arkansas, but across the state. His service on the WECC Board of Directors provided leadership, guidance, and exemplary willingness to accept the evolving change in the electric utility industry in Arkansas throughout the many years.

We are grateful and appreciative for his many years of service and devotion to the membership of Woodruff Electric Cooperative and wish to express our heartfelt sympathy and condolences to his family and friends.



**Woodruff Electric
Cooperative Corporation**

3201 Highway 1 North,
Forrest City, Arkansas 72335
(870) 633-2262
Outages: (888) 559-6400
www.woodruffelectric.coop



©NRECA