



DEADLINE APPROACHING FOR HIGH SCHOOL STUDENTS

Glynn and Mildred Carpenter Scholarship, High Voltage Lineman Scholarship and NRECA Youth Tour

Visit www.woodruffelectric.com for rules, applications and more information!

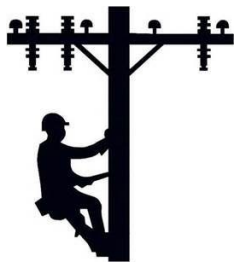
Deadline: March 23, 2020



GLYNN AND MILDRED CARPENTER SCHOLARSHIP

High school seniors graduating from any public or private high school in the counties of Woodruff, Cross, Monroe, St. Francis, Lee or Phillips or in the town of Des Arc; or be a graduate of home schooling while residing in a household of a Woodruff Electric member are eligible for this scholarship. The applicant must also be the child, grandchild or dependent of a Woodruff Electric member.

HIGH VOLTAGE LINEMAN PROGRAM - ASU NEWPORT



Woodruff Electric offers a sponsorship for the High Voltage Lineman training at Arkansas State University – Newport for a graduating senior. This 10-month program offers an Associate of Applied Science in General Technology with emphasis in High Voltage Lineman. For further questions about the program contact ASU-Newport at 1-800-976-1676 or visit their website at <https://www.asun.edu/programs/high-voltage>.

NRECA YOUTH TOUR – WASHINGTON, D.C.



The NRECA Youth Tour, June 19-25, is an all-expense paid trip to Washington, D.C. The two winners will be selected through an essay contest. Applicants must be high school juniors attending a high school in the Woodruff Electric Cooperative service territory or homeschooled in the same area. Don't miss out on this incredible, life-changing opportunity. 2020 Essay Topic: *"Describe how electric cooperatives operate based on the seven cooperative principles. Tell which of the seven cooperative principles you think is the most important and why?"*



KNOW WHAT TO DO

if you are in a car wreck
with a power pole.

Learn more at



SPRING EFFICIENCY QUIZ

Spring is just around the corner!
Take this quiz to learn how you
can help save energy around
your home.



- Sealing air leaks around _____ saves energy and keeps your home comfortable.
A) doors B) windows C) both A and B
- Unplug devices and electronics that consume energy even when they're not in use, like _____.
A) refrigerators B) cell phone chargers C) dishwashers
- Ceiling fans cool people, not rooms, so turn them off when you leave the room to save energy.
A) True B) False
- LED bulbs typically use _____ less energy than incandescent light bulbs. **A) 25% B) 50% C) 75%**
- Planting _____ around your home can block unwanted heat from the sun.
A) flowers B) shade trees C) vegetables

Answer Key: 1. C 2. B 3. A 4. C 5. B

ENERGY EFFICIENCY

Energy Efficiency Tip of the Month

Placing hot food in the refrigerator makes the appliance work harder than necessary, using more energy. Allow food to cool down before you place it in the fridge.



RIGHT-OF-WAY

We clear certain areas in our service territory, known as right-of-way, to:

- ✓ Keep power lines clear of tree limbs
- ✓ Restore power outages more quickly
- ✓ Reduce unexpected costs for repairs

Maintaining the right-of-way improves service reliability for you – our members!



Automatic Bank Draft "Set It and Forget It"

When you sign up for automatic bank draft (ABD) to pay your monthly electric bill from your bank account, it saves you time plus it means one less check to write and keep track of each month. You'll see your electric bill payment debited each month from your bank account. Complete the ABD form at your local WECC office along with an attached voided blank check.

Woodruff Electric Cooperative Corporation

P.O. Box 1619
3201 Hwy 1 North
Forrest City, Arkansas 72336
Tel. (870) 633-2262
Fax: (870) 633-0629

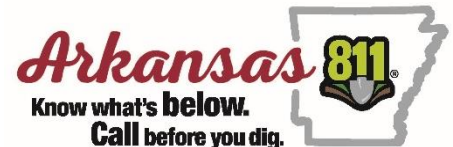
Office Hours:

8:00am to 5:00pm
Monday through Friday

Contact Numbers:

Augusta: (870) 347-2431
Forrest City: (870) 633-2262
Moro: (870) 768-4821
Barton: (870) 572-2800

www.woodruffelectric.coop



Dial 811 or
1-800-482-8998
www.arkonecall.com

OUTAGE REPORTING

Call our automated outage reporting number at:

Call 870-633-7100 or
1-888-559-6400